

ESPÉCIES DEL MEDITERRÁNEO



PEDES

ESPÉCIES DEL MEDITERRÁNEO



Sciaena Umbra
Corvallo

6-15m
30-50cm



Tripterygion Tripteronotus
Moma nariguda

1-6m
8cm



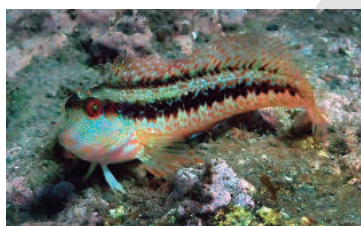
Diplodus puntazzo
Sargo picudo

1-25m
45cm



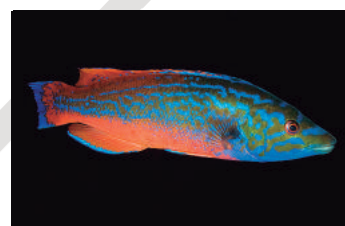
Symphodus melanocercus
Llamprega

1-6m
10-40cm



Parablennius rouxi
Babosa de banda oscura

1-6m
20cm



Labrus bimaculatus
Gallito de rey

1-200m
30cm



Gobius niger
Chaparrudo

1-6m
15cm



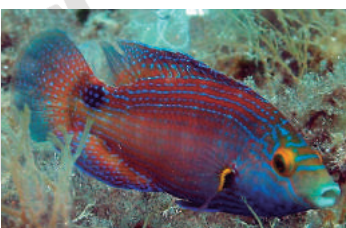
Trigla lyra
Garneo

20-300m
35cm



Anthias anthias
Tres colas

20-70m
15cm



Symphodus mediterraneus
Vaqueta

4-25m
16cm



Apogon imberbis
Salmonete real

1-30m
5-10cm



Balistes carolinensis
Ballesta

20-200m
50cm



Gobius bucchichi
Gobio dorado

2-10m
10cm



Phycis phycis
Brótola de roca

1-200m
25cm



Serranus scriba
Serrano

1-60m
25cm



ESPÉCIES DEL MEDITERRÁNEO



Seriola dumerili
Seriola

18-72m
40cm ∞



Bothus podas
Podas

1-400m
45m ∞



Trachinus draco
Araña

1-300m
40cm ∞



Sarpa salpa
Salpa

1-20m
20-30cm ∞



Diplodus cervinus
Sargo breado

1-40m
50cm ∞



Blennius ocellaris
Cabruza

2-200m
20cm ∞



Zeus faber
Pez de San Pedro

20-200m
50cm ∞



Symphodus ocellatus
Tordo de roca

4-25m
12cm ∞



Parablennius pilicornis
Babosa

0-6m
12cm ∞



Gobius geniporus
Gobio de arena

5-30m
16cm ∞



Xyrichtys novacula
Raor - Galan

1-50m
30cm ∞



Mola mola
Pez luna

0-15m
30cm ∞



Diplodus annularis
Raspallón

1-50m
20cm ∞



Diplodus sargus
Sargo

1-20m
30cm ∞

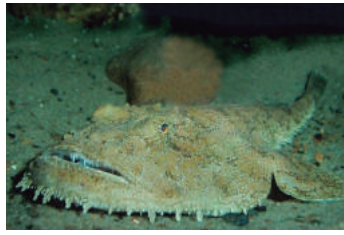


Mullus surmuletus
Salmonete de roca

1-100m
25-35cm ∞



ESPÉCIES DEL MEDITERRÁNEO



1-500m
60cm ∞

Lophius piscatorius
Rape



1-400m
12m ∞

Epinephelus marginatus
Mero



4-25m
15-30cm ∞

Labrus merula
Merlo



15-20m
10-30cm ∞

Symphodus tinca
Peto



3-120m
25cm ∞

Coris julis
Julia



1-50m
40-50cm ∞

Dentex dentex
Dentón



15-100m
20-50cm ∞

Pagellus erythrinus
Breca



1-30m
50cm ∞

Sparus aurata
Dorada



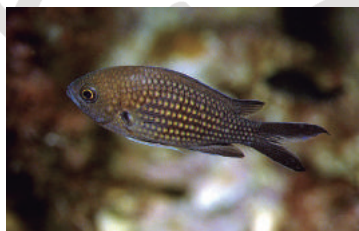
1-25m
30cm ∞

Diplodus vulgaris
Mojarra



1-90m
40-60cm ∞

Dicentrarchus labrax
Lubina



1-25m
12cm ∞

Chromis chromis
Castañuela



1-20m
30cm ∞

Oblada melanura
Oblada



1-25m
40cm ∞

Lithognathus mormyrus
Herrera



1-60m
20cm ∞

Serranus cabrilla
Cabrilla



1-150m
30cm ∞

Boops boops
Boga



Pez sensible



Pez peligroso



Pez urticante



Talla



Profundidad



Mar abierto



Arena



Roca



Arena/Roca

ESPÉCIES DEL MEDITERRÁNEO



Thalassoma pavo
Pez verde

2-30m
25cm
○



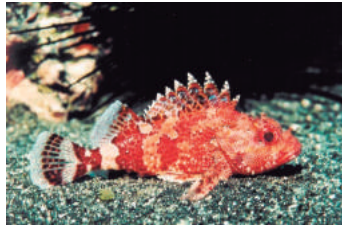
Chelon Labrosus
Lisa

2-15m
60cm
○



Scorpaena scrofa
Cabracho

5-200m
30cm
●



Scorpaena loppei
Escorpion enano

20-300m
15cm
●



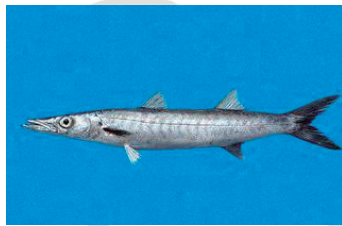
Hippocampus hippocampus
Caballo marino

1-30m
15cm
●



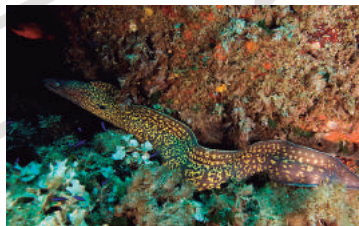
Conger conger
Congrio

1-1000m
1-3m
●



Sphyræna sphyræna
Espetón

0-50m
1m
●



Muraena helena
Morena

1-100m
130cm
●



Myliobatis Águila
Águila marina

1-300m
80cm
●



Pez sensible



Pez peligroso



Pez urticante



Talla



Profundidad



Mar abierto



Arena



Roca



Arena/Roca

INVERTEBRADOS

ESPÉCIES DEL MEDITERRÁNEO

Cefalópodo 40cm



Sepia officinalis
Sepia



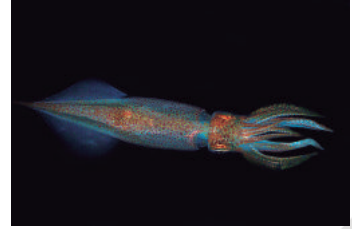
Cefalópodo 30cm



Eledone cirrhosa
Pulpo blanco



Cefalópodo 50cm



Loligo vulgaris
Calamar



Cefalópodo 50cm



Octopus vulgaris
Pulpo



Crustáceo 5cm



Palaemon elegans
Quisquilla



Crustáceo 3.5cm



Inachus dorsettensis
Araña de mar



Crustáceo 40cm



Homarus gammarus
Bogavante



Crustáceo 45cm



Scyllarus arctus
Santiaguiño



Crustáceo 4cm



Pagurus prideaux
Ermitaño de hondura



Crustáceo 30-50cm



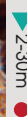
Palinurus elephas
Langosta



Crustáceo 6cm



Gnathophyllum elegans
Gambeta arlequí



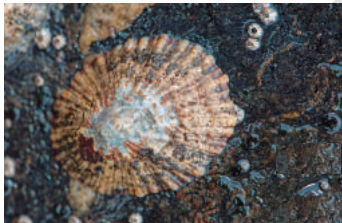
Crustáceo 40cm



Dardanus arrosor
Gran ermitaño



Molusco 2-5cm



Patella caerulea
Lapa



Molusco 4cm



Chiton olivaceus
Quitón verde



Molusco 3cm



Naticarius hebraeus
Caracol luna



No tocar



Urticante



Profundidad



Mar abierto



Arena



Roca



Arena/Roca

ESPÉCIES DEL MEDITERRÁNEO



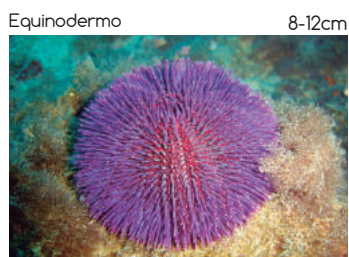
Flabellina affinis
Flabellina



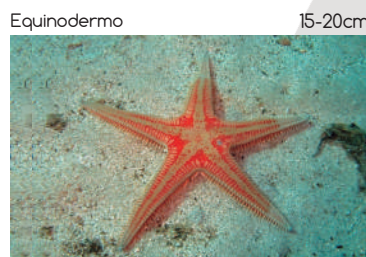
Murex brandaris
Cañadilla



Peltodoris atromaculata
Vaquita suiza



Sphaerechinus granularis
Erizo violáceo



Astropecten aranciatus
Estrella de arena



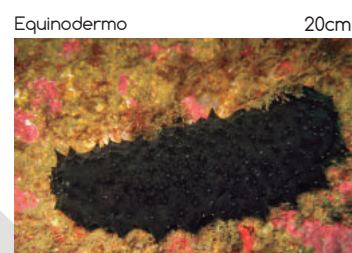
Echinaster sepositus
Estrella espinosa roja



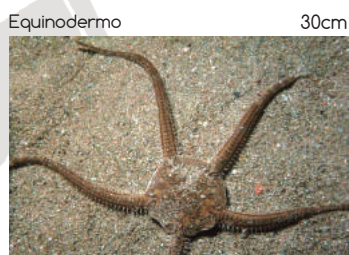
Ophiothrix fragilis
Ofiura de espinas finas



Coscinasterias tenuispina
Estrella de espinas finas



Holothuria forskali
Cohombreo de mar negro



Ophiura texturata
Ofiura de escamas



Antedon mediterranea
Clavelina



Sabella spallanzanii
Plumero de mar



Protula intestinum
Protula



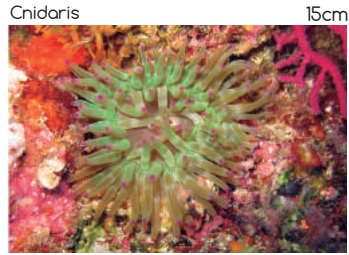
Sertella septentrionalis
Encaje de Venus



Posidonia oceanica
Posidonia



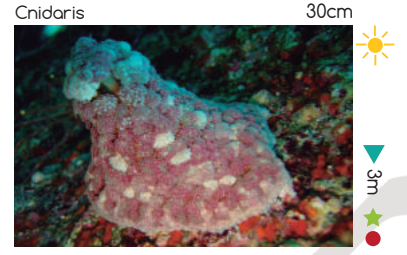
ESPÉCIES DEL MEDITERRÁNEO



Cribrinopsis crassa
Actinia gorda



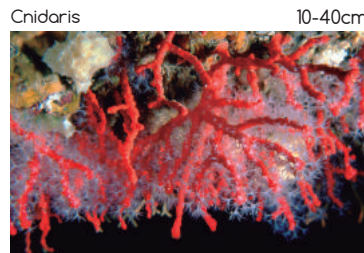
Alicia mirabilis
Alicia



Alicia mirabilis
Alicia



Cotylorhiza tuberculata
Agua cuajada



Corallium rubrum
Coral rojo



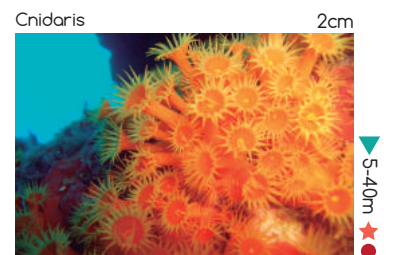
Anemonia viridis
Anémona



Pelagia noctiluca
Acalefo



Rhizostoma pulmo
Aguamar



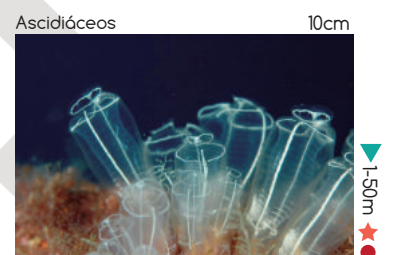
Parazoanthus axinellae
Anémona incrustante amarilla



Alcyonium acaule
Mano de muerto



Actinia equina
Tomate de mar



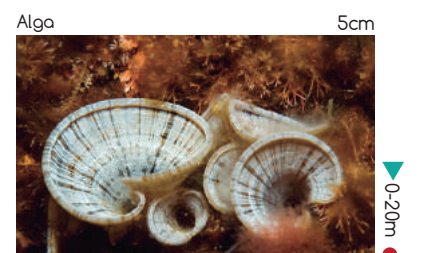
Clavelina lepadiformis
Ascidia bombilla



Halocynthia papillosa
Ascidia roja



Prostheceraeus roseus
Planaria rosa



Padina pavonica
Padina

